



**PROPRIETARY INFORMATION**  
 INFORMATION ON THIS DOCUMENT IS A TRADE SECRET, PROPRIETARY, AND SHALL NOT BE USED OR REPRODUCED IN WHOLE OR IN PART WITHOUT WRITTEN AUTHORIZATION OF SPS TECHNOLOGIES

DRAWING NUMBER  
SD. 300. 66336

ISSUE DATE  
6/22/85

REVISION

④

8/31/95

⑤

10/02/95

⑥

6/09/97

⑦

12/28/00

⑧

1/26/2001

⑨

2/16/2001

⑩

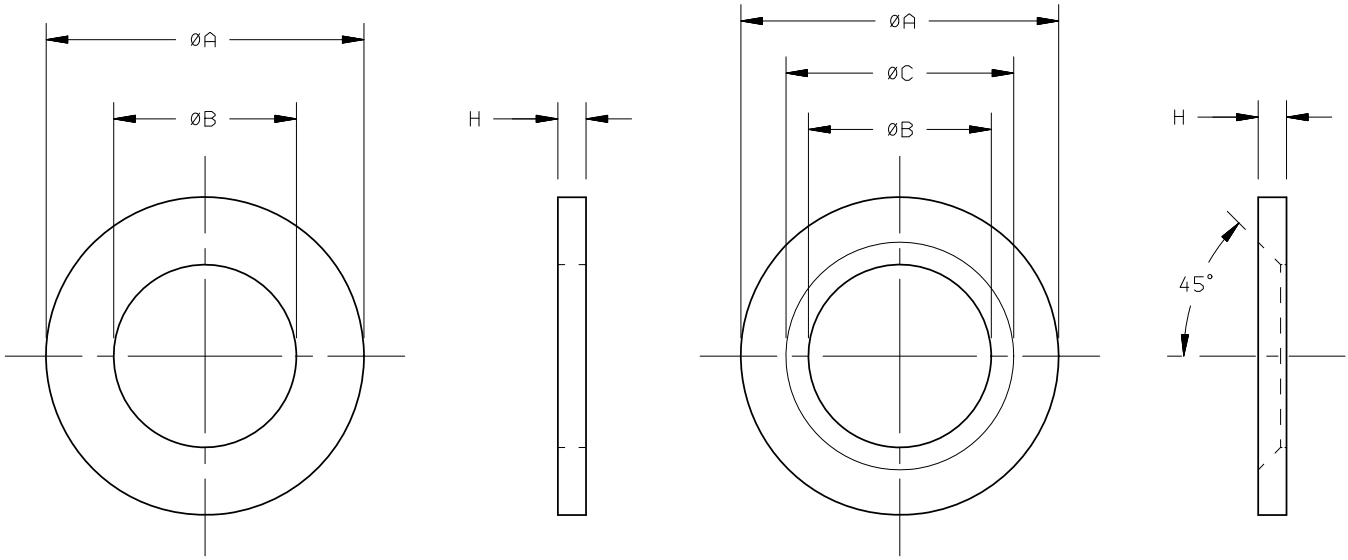
8/15/02

⑪

8/21/08

⑫

8/12/09

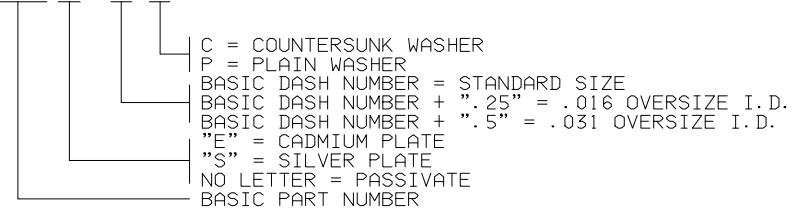


## PLAIN WASHER

## COUNTERSUNK WASHER

BASIC DASH NUMBER	ØA	ØB						±.005 STANDARD	±.005 ØC / Ø / SIZE	±.005 ØC / Ø / SIZE	H	
		STANDARD		.016 O/SIZE		.031 O/SIZE					MAX	MIN
		MAX	MIN	MAX	MIN	MAX	MIN					
-3	.468	.195	.191	.211	.207	.226	.222	.285	.301	.317	.069	.057
-4	.531	.255	.251	.271	.267	.286	.282	.345	.361	.376	.069	.057
-5	.593	.318	.314	.334	.330	.349	.345	.407	.423	.439	.069	.057
-6	.687	.380	.376	.396	.392	.411	.407	.502	.518	.534	.085	.071
-7	.781	.443	.439	.459	.455	.474	.470	.564	.580	.596	.085	.071
-8	.875	.505	.501	.521	.517	.536	.532	.627	.643	.659	.085	.071
-9	.968	.568	.564	.584	.580	.599	.595	.689	.705	.721	.085	.071
-10	1.062	.631	.627	.647	.643	.662	.658	.783	.799	.815	.085	.071
-12	1.250	.756	.752	.772	.768	.787	.783	.908	.924	.940	.085	.071
-14	1.437	.881	.877	.897	.893	.912	.906	1.033	1.049	1.065	.085	.071
-16	1.625	1.006	1.002	1.022	1.018	1.037	1.033	1.158	1.174	1.190	.119	.099
-18	1.875	1.131	1.127	1.147	1.143	1.162	1.158	1.283	1.299	1.315	.119	.099
-20	2.125	1.256	1.252	1.272	1.268	1.287	1.283	1.440	1.456	1.472	.119	.099
-22	2.313	1.381	1.377	1.397	1.393	1.412	1.408	1.565	1.581	1.597	.119	.099
-24	2.500	1.506	1.502	1.522	1.518	1.537	1.533	1.690	1.706	1.722	.119	.099

- MATERIAL: A286 PER CHEMISTRY OF AMS 5853 OR AMS 5525 OR AMS 5732.
- HARDNESS: 34-46 HRC.
- FINISH: PASSIVATE PER AMS2700, TYPE 2.  
 CADMIUM PLATE PER AMS-QQ-P-416, TYPE II, CLASS 2.  
 SILVER PLATE PER AMS 2411 (.0002/.0006 THICK).  
 SEE NOTE 7 FOR CODING.
- FLUORESCENT PENETRANT INSPECT PER ASTM E1417. ACCEPTANCE CRITERIA PER SPS-I-629.
- WASHER FACES TO BE PARALLEL WITHIN .002.
- WASHERS SHALL BE FREE OF BURRS AND SHARP EDGES.
- PART NUMBER: 66336( )-( ) ( )



EXAMPLE: 66336-4C = COUNTERSUNK WASHER FOR .250 NOMINAL BOLT DIAMETER  
 66336-4.25P = PLAIN WASHER FOR .266 NOMINAL BOLT DIAMETER  
 66336-4.5P = PLAIN WASHER FOR .281 NOMINAL BOLT DIAMETER

TOLERANCES ±.010 AND ±2"  
 SURFACE ROUGHNESS 125√  
 UNLESS OTHERWISE NOTED  
 DRAFTED IN ACCORDANCE WITH ANSI Y14.5M-1982  
 DRAWN BY: STEVE FOSTER DATE: 12/28/00  
 APPROVED: S FOSTER DATE: 8/12/09  
 APPROVED: S BUZOLITS

FSCM NO. 56878  
 CUSTODIAN:  
 JENKINTOWN, PA.

**TITLE**  
 WASHER, PLAIN AND COUNTERSUNK  
 A286 CORROSION RESISTANT STEEL  
 USE WITH BOLTS TO 180 KSI LEVEL

STANDARDS AND SPECIFICATIONS  
 SPS-W-770  
**PART NUMBER:**  
 66336( )-( ) ( )  
 SHEET 1 OF 1